

Azulón

AT MESA VERDE®

A RESORT-INSPIRED
55+ APARTMENT COMMUNITY



LIVE YOUR VACATION EVERY DAY

Discover an oasis of serenity, with endless conveniences and amenities where life is simpler and choices abound. Experience Azulón at Mesa Verde®, an exhilarating smoke free, gated and pet friendly apartment community in Costa Mesa. Open, luxurious floor plans, lush landscaping, and Santa Barbara inspired architecture within a desirable Orange County address—bring a long awaited resort style rental experience to the 55+ crowd.





SITE PLAN



LEGEND

1 BEDROOM/1 BATH		1 BEDROOM+DEN/1 BATH		2 BEDROOM/2 BATH	
A1 • AVALON	A5 • GRANADA	B1 • SAN MIGUEL	R REVERSE PLAN	E ELEVATOR	B BICYCLE STORAGE (FIRST FLOOR)
A2 • CATALINA	A6 • CASTILLO	B2 • INDIGO	WOOD VINYL PLANK FLOORING (CARPET IN BEDROOMS)	S STAIRS	R RESTROOMS
A4 • SANTA CRUZ		B4 • MIRAVAL	COVERED PARKING	M MAIL	T TRASH
1 BEDROOM ALCOVE/1 BATH		2 BEDROOM/1.5 BATH			
A3 • ANACAPA	B3 • SANTA ROSA	B5 • MONTECITO			



COMMUNITY AMENITIES

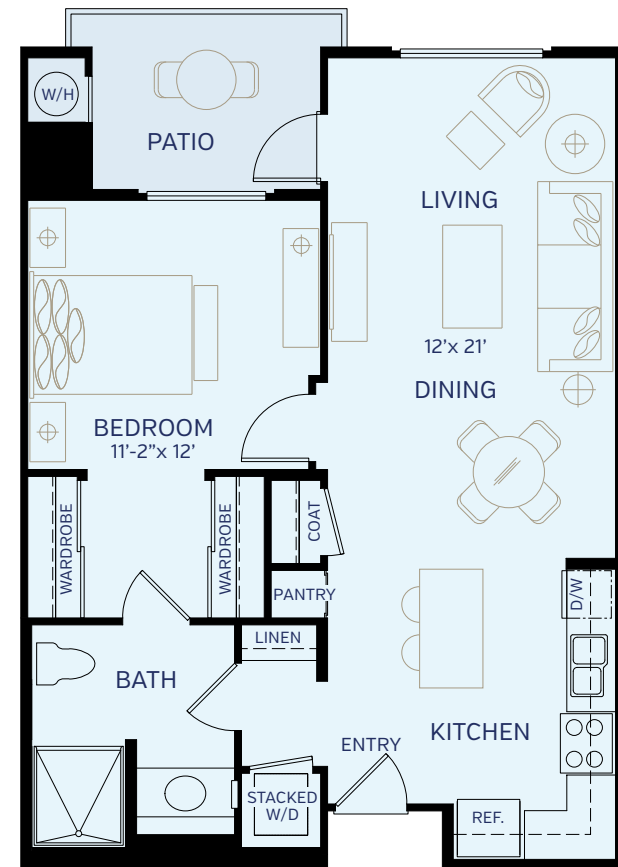
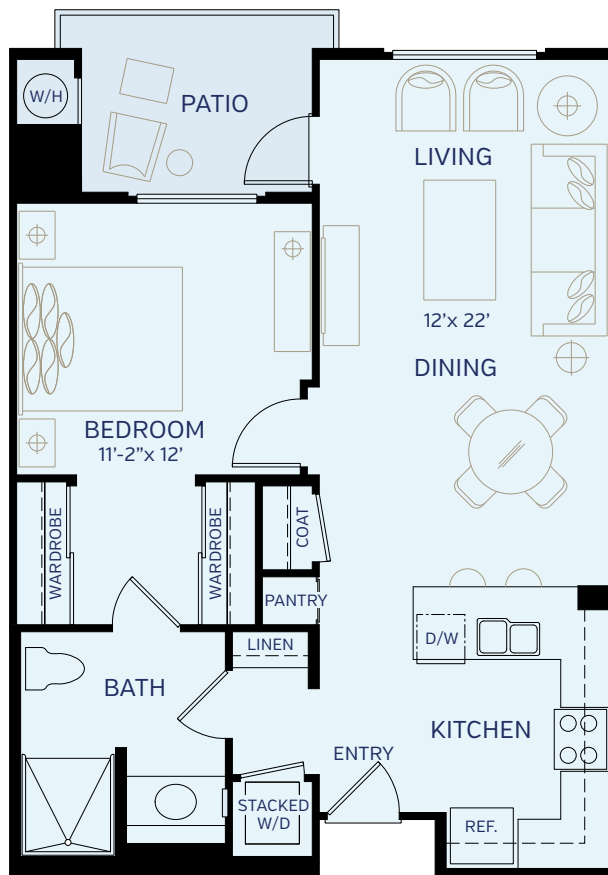
- ♦ Smoke free community
- ♦ Gated with resident controlled access
- ♦ Connected to The Shops at Mesa Verde for shopping, dining and services
- ♦ Six conveniently located elevators
- ♦ Pet friendly with pet parks (breed policies apply)
- ♦ 8,300+ square foot clubhouse
 - Library, lounge and demonstration kitchen
 - Screening room with 4K ultra high definition projector
 - Billiard/game room with 4K flat screen TV
- ♦ Heated saltwater pool and spa
- ♦ Fitness center and yoga room
- ♦ Built in gas barbecues, outdoor dining patios, fountains and fireplaces
- ♦ Business center and conference room with PCs and Macs, plus color copier/scanner/printer
- ♦ Arts and Crafts room
- ♦ Furnished outdoor courtyards
- ♦ Event lawns with festival lighting
- ♦ Raised bed organic gardens
- ♦ Complimentary Wi Fi in clubhouse and pool area
- ♦ Programs Concierge to arrange resident social, entertainment, health and wellness activities
- ♦ Onsite storage from 15 685 square feet available
- ♦ Bike storage room



FLOOR PLANS

AVALON

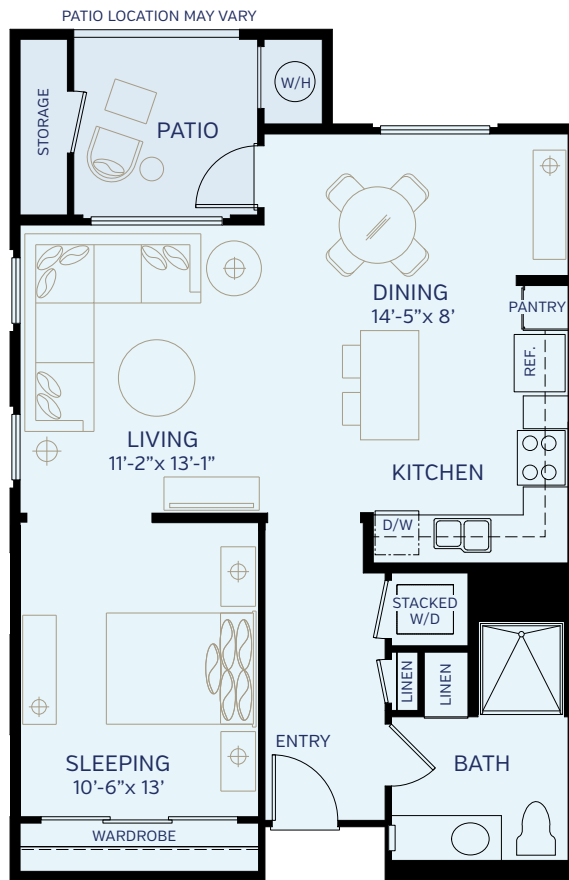
Plan A1
1 Bedroom / 1 Bath
736 square feet



CATALINA

Plan A2
1 Bedroom / 1 Bath
736 square feet





ANACAPA

Plan A3

1 Bedroom / 1 Bath

780 square feet

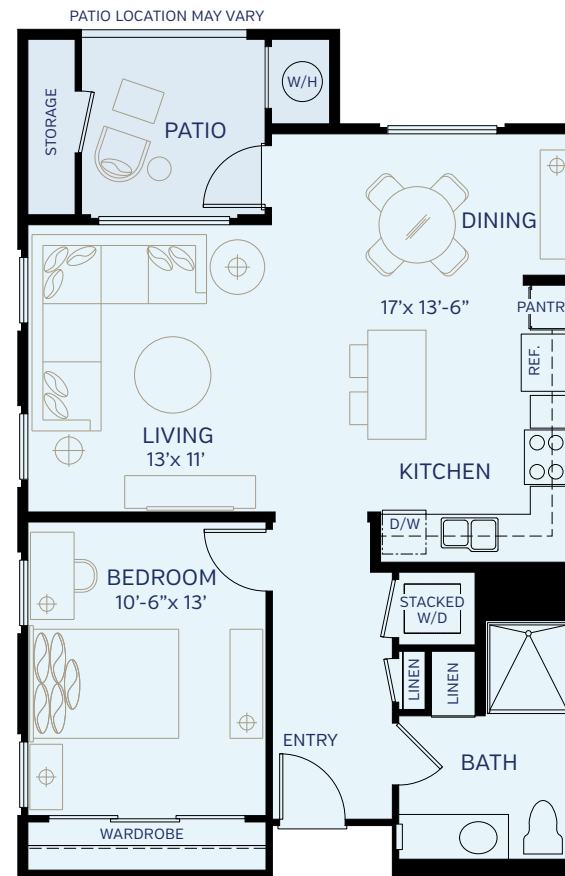


SANTA CRUZ

Plan A4

1 Bedroom / 1 Bath

780 square feet



FLOOR PLANS

CASTILLO

Plan A6

1 Bedroom + Den/1.5 Bath
920 square feet



GRANADA

Plan A5

1 Bedroom + Den/1 Bath
890 square feet



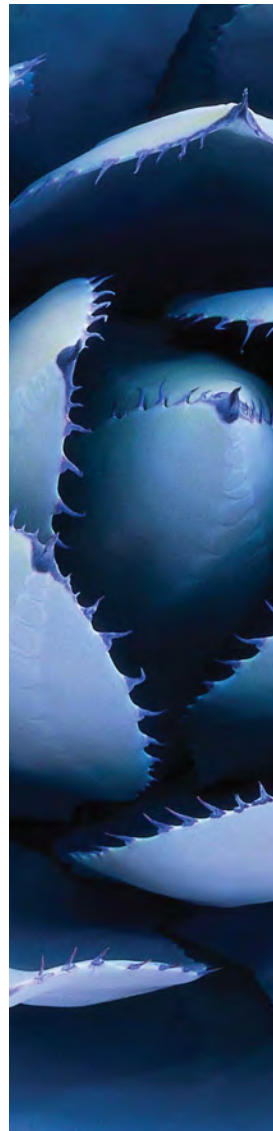


INDIGO

Plan B2
2 Bedroom / 2 Bath
1,049 square feet

SAN MIGUEL

Plan B1
2 Bedroom / 2 Bath
1,005 square feet



FLOOR PLANS



SANTA ROSA

Plan B3

2 Bedroom / 1.5 Bath

1,074 square feet

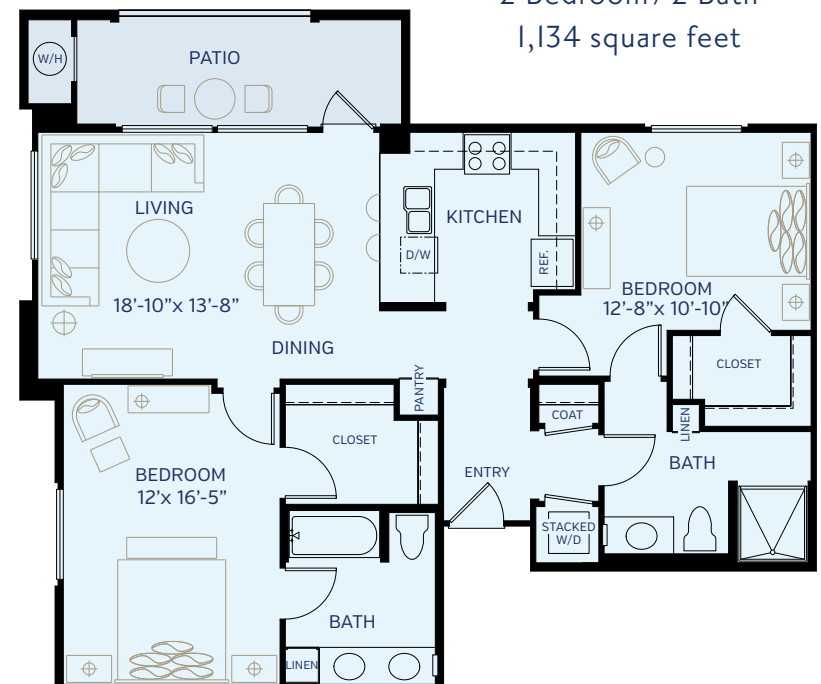


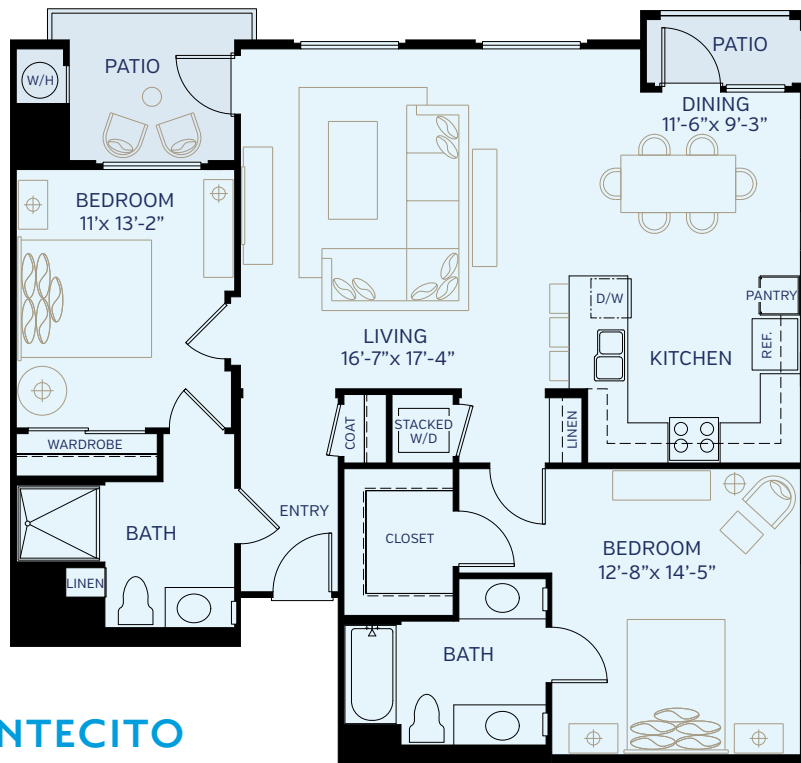
MIRAVAL

Plan B4

2 Bedroom / 2 Bath

1,134 square feet





MONTECITO

Plan B5

2 Bedroom / 2 Bath
1,230 square feet

APARTMENT FEATURES

- 1 bedroom, 1 bedroom + den and 2 bedroom apartment homes
- In home full size washers and dryers
- GE ENERGY STAR® stainless steel refrigerator
- GE stainless kitchen appliances with gas cooking
- Granite countertops in kitchens and baths
- Carpeting and wood vinyl plank flooring
- Designer selected fixtures, lighting and ceiling fans
- Pantries, double poled closets, linen and coat closets
- Energy efficient heating and air conditioning
- Pre wired for high speed Internet, phone, cable and satellite TV
 - Your choice of AT&T U verse, DIRECTV, Dish Network, and Charter Spectrum
- Private patios and balconies, some with storage





Azulón

AT MESA VERDE®




1500 Mesa Verde Drive East, Costa Mesa, CA 92626

Exit 405 at Harbor Blvd. Go south 1 ½ miles to Mesa Verde Dr. East

714.438.1500 | AzulonApts.com



 Plans, specifications, features, square footages, pricing, landscaping and other elements are subject to change without notice or obligation and they may vary among units. Some images are artist's conception. Interior decorations and furnishings are provided for display only; units are leased unfurnished. DRE Corporate License No. 01201696